

PRODUCTION PACK



ALBERT HALL
MANCHESTER



OUR STORY

Albert Hall is a Grade II listed former Wesleyan Chapel brought back to life in 2013 as a world-class, award-winning, independent music venue and events space that has become part of the cultural fabric of Manchester.

It's an intimate and opulent setting for large scale events, with stained glass windows, ornate architecture, a pipe organ above the stage and over the years has hosted everything from club nights to intimate live gigs, brand launches to weddings and beyond.

CONTACTS

Address:

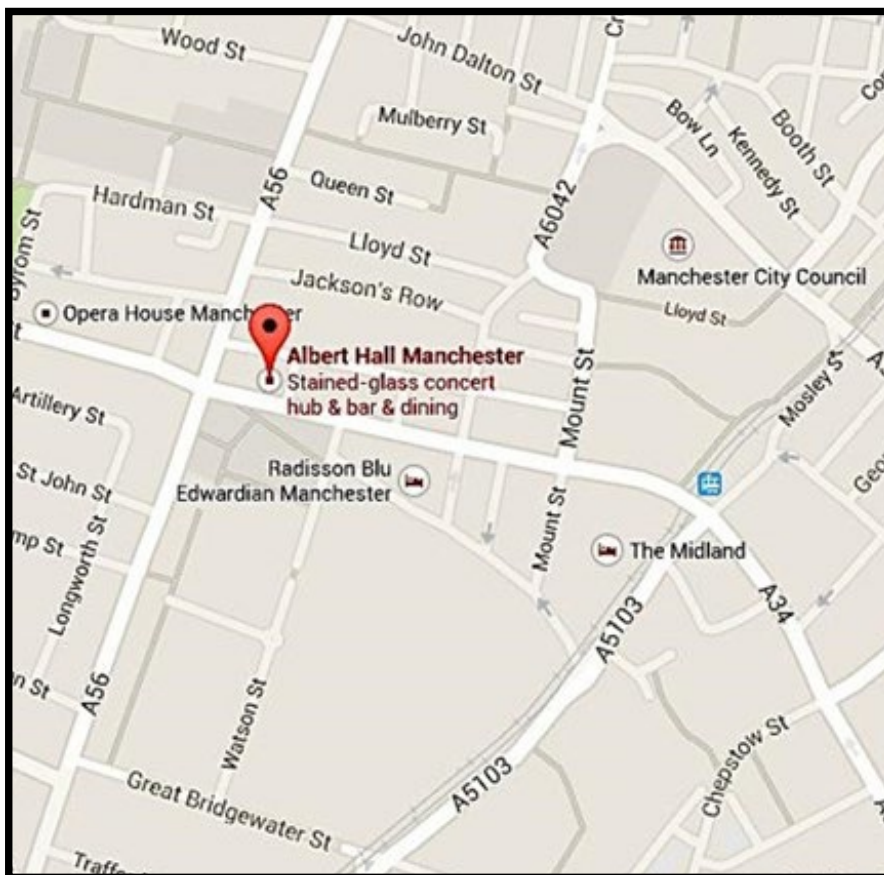
Albert Hall
27 Peter Street
Manchester
M2 5QR

Website:

www.alberthallmanchester.com

Map:

<https://tinypurl.com/48zda86t>

**Live Programming Manager:**

Simon Butcher
T: 07597 845959
butch@wearemissionmars.com

Club Programming Manager:

Kat Warburton
T: 07464103444
kat@wearemissionmars.com

Production Management & Advance:

Mark Wilson T: 07712 305502
David Lawrence T: 07957 355987
production@alberthallmanchester.com

Venue Manager

Sam Litten
07476242449
sam@alberthallmanchester.com

Parking Information

Secure Parking Area Directly Outside the Venue

We can Accommodate:

- 1 x Tour Bus – 1 x 45ft Truck – 1 x Splitter
- Hours of Operation 8am-1am – Cost £120.00 + Vat
- If techs are needed before 11am there is an additional charge
- Parking needs to be arranged with Albert Hall minimum 5 days in advance.

Power information

Available on arrival, please advise during advance –
32/3 & 16/1 at the Production Entrance & Public Entrance .

Cables must NOT trail on the pavement. It must be secured to the
lamp post outside the venue.



VENUE INFO



VENUE INFO

Capacities:

- Live Standing – 1,900-1,800 (demographic dependant)
- Live Seated – 1,000
- Live Comedy - 950
- Club Standing – 2,500



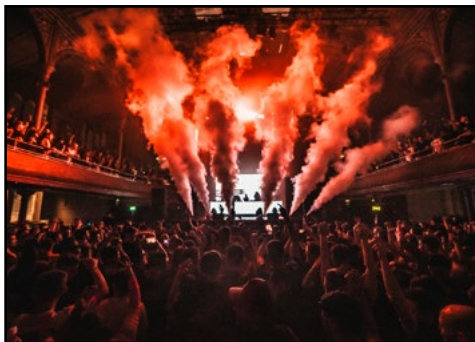
Live Standing



Live Seated



Live Standing



Club Standing

Standard Operating Hours

- Standard load in with local crew is from 10am.
- House techs on site from 11am
- If techs are needed before 11am there is an additional charge of 75p/h per technician.

Crew, Runners & Catering Assistants

In house services provided by DNG Production & Event Crew
Numbers to be agreed in advance

Merch

Albert Hall's Merchandise space is a 1.5m wide, and 2 meters deep constructed of steel decking with decorative paneling to cover. The area comes with uplighters controllable by the onsite lighting designers, and a grid mesh hung against the backdrop of stained-glass windows. This area is situated in prime location, situated within the main venue space, next to the main entrance itself. There is a 15% fee on net merchandise takings payable on the night. We do not accept invoicing, so if you require this facility, please ensure that payment is available on the night by either cash, or bank transfer. Additional services included in this fee include the supply of a merchandise clerk, provided by the venue. We also can provide a PDQ machine. If you would like to use this facility, please email Ellie@alberthallmanchester.com.

Load In

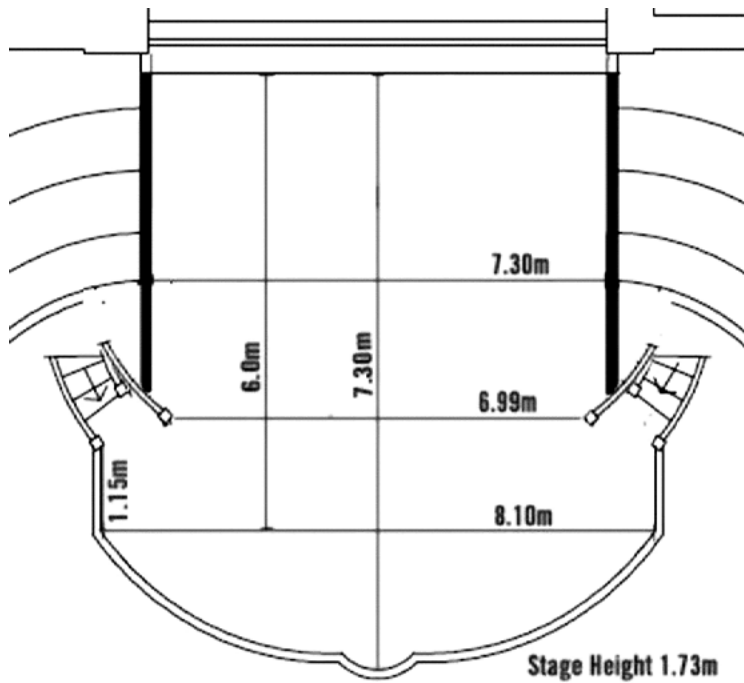
From parking area, through double doors, up three flights of stairs and ramped on to stage.

VENUE POWER

All distribution to be arranged in advance.

Mains available for sound: 32/3, 63/3, 32/1 or 16/1 available under stage left.

STAGE

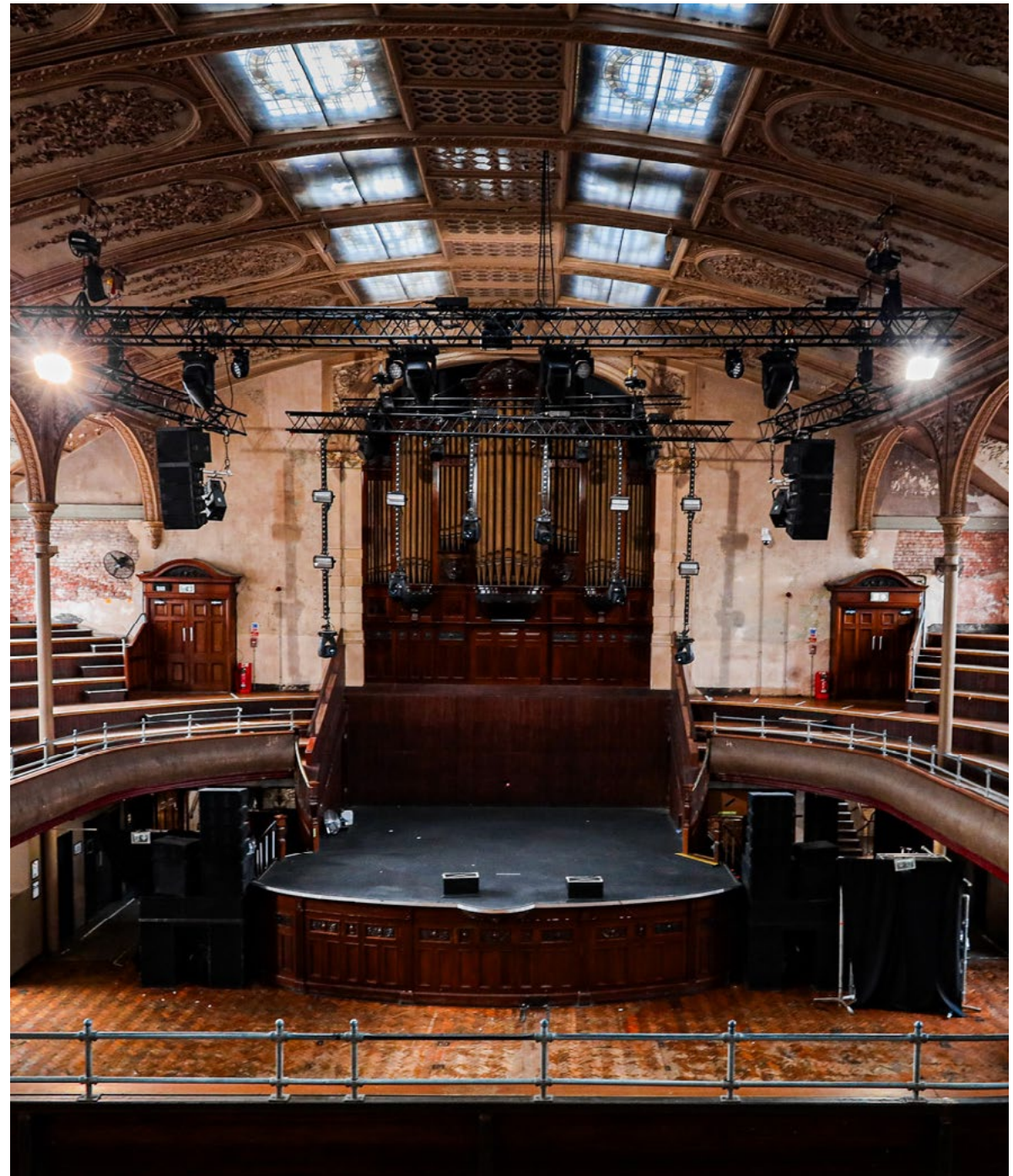


Stage Dimensions:

7.3m Deep, 7.3m Wide, 1.73m High

Please note: Stage has no wings. See drawing above

- Stage to Ceiling: 10.8m
- Stage to Truss: 8.5m
- Barrier is MOJO type
- House risers are available 1x8x8x1 Drum Riser & 2x8x2 DJ Riser



BACK OF HOUSE



GREEN ROOMS

There are two Green Rooms available.

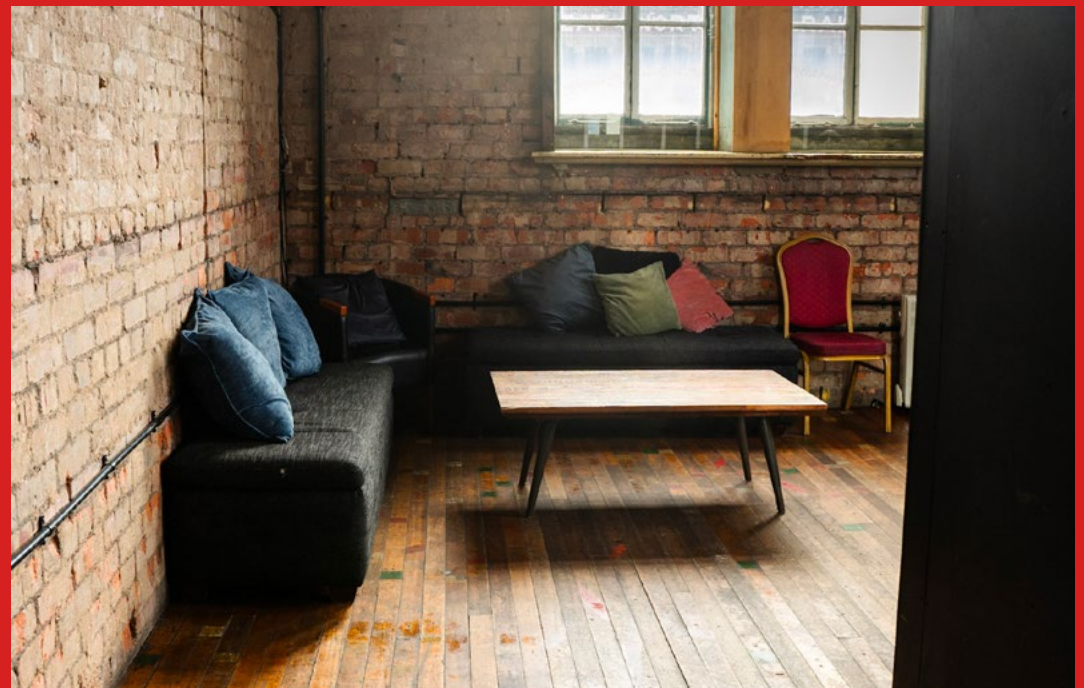
Dimensions/facilities:

Green Room 1 is 6.1 m x 4.2 m and is ensuite with shower, and is nearest dressing room to stage.

Green Room 2 is 3.6m x 4.8m – please note this is on the 3rd floor of the venue.

The Production Office is 3.6 m x 1.6 m is stage right, stage level.

There are backstage toilets with an additional shower separate to Green Room 1 next to the production office.



LIGHTING



LIGHTING

Stage Truss

2 x Lift Turn Move Load Guard Hoist – 9m Slick OV40 in Black
6 x Thomas drop Bars 2 at 5' 2 at 9' 2 at 13'

Fixtures On Truss

6 x Clay Paky Mythos Hybrid – Spot, Beam, Wash 12 x Showtec
Sunstrip Active DMX
6 x Clay Paky Stormy CC LED Strobe
4 x Robe Robin LED600 Wash

Front Truss

2 x Lift Turn Move Load Guard Hoist – 12m Slick OV40 in Black
4 Aryton Perseo Spots
4x Robe Robin LED600 Wash
4 x HQI 400w Flood (Work Lights)

Projector Truss

2 x Lift Turn Move Load Guard Hoist – 6m Slick OV30 in Black
Projector truss situated above front of house

Control

Avolites Tiger Touch 2
4 Lines of DMX 5 (2 x DMX5 Lines House Rig Control –
2 x DMX5 Lines Touring/Spare)
2 Lines of Cat5 Ethernet
125/3 Rubber Box Distro (6 x Hot Socapex 15 x 16a 3x32/3 2 x 63/3)
DF50 Haze Machine (Oil)
Guardian 4way Motor Controller

Venue Lighting

9 x Palco3 RGB LED Par Zip6 6ch DMX Desk

Main Room Rigging Information

Stage Truss

1 x 9m/30ft Slick OV40 Black Rear Upstage Truss suspended
from two electric chain hoists.

Front Truss

1 x 12m/40ft Slick OV40 Black Front Truss suspended from two
electric chain hoists.

PA Spreader Trusses

2 x 4m/20ft Slick OV40 Black PA Spreader Trusses, both dead
hung from two points.

Projector Truss

1 x 6m/20ft Slick OV30 Black Projector Truss suspended
from two electric chain hoists.

Motors and Points

All points in the main hall roof are rated at 320kg per point.

The house rig has Load Guard Electric Chain Hoist Motors
SWL 400kg De-rated Clutch to 290kg 13m Chain Length.

These are Category A rated motors, suitable for the holding of
overhead loads without secondary safety backups.

These motors are top hung/inverted from the venue roof
points, hooks down, control cables are hardwired back to the
key operated motor control located in the under/backstage
plant room.

If these Electric Chain Hoists become overloaded they will not
run.

Any plans to alter or re-design the house rig must be
submitted to the venue for load calculations prior to event
load in to ensure that the weight of equipment does not
exceed the load capacity of the venue rigging points.

In addition to the OV40/30 Truss system there is a lightweight
7.5m Ladder Beam truss located at the rear of the stage. This
Ladder Beam truss is suitable for lightweight backdrops only
and has a SWL 30kg spread liner load.

AUDIO



AUDIO

125 amp 3 phase drops on stage. House rig runs from this.
16 amp drops on stage.

FOH System

Front of House Console -

- 1 x Yamaha CL5 72+8/24/3 Mixing Console
- 2 x Yamaha RIO 3224 Stage Box *Shared with Monitors
- Flown d&b Y Series Loudspeaker System to cover the balcony level.
- Flown PA is fixed at trim height and cannot be moved.
- Ground stacked d&b V Series Loudspeaker system with B2 subs and Q7 in fills.
- Touring multicores can be run to FOH using the hanging eyes located under the balcony.

Monitor System

Console -

- 1 x Yamaha CL5 72+8/24/3 Mixing Console
- 2 x Yamaha RIO 3224 Stage Box *shared with FOH

Stage Monitoring Loudspeaker System -

- 8 x d&b M4 Wedge Monitors
- 1 x d&b Q-Sub Loudspeaker
- 4 x d&b D12 Power Amplifiers

The Monitor position is located stage left, on a riser platform behind the speaker stack.

PA Configuration

Microphones and Stands Stock

Mics:

- 2 Shure Beta52A Kick Drum Mic
- 2 Shure Beta91A Kick Drum Mic
- 8 Sennheiser e904 Drum Mic
- 6 Audio Technica AT4041 Condenser
- 2 Audio Technica AT4040 Condenser
- 4 Shure SM58 Dynamic Mic
- 4 Shure Beta58A Dynamic Mic
- 6 Shure SM57 Dynamic Mic
- 6 Shure Beta57A Dynamic Mic
- 2 Sennheiser e906 Guitar Mic

DI's:

12 BSS AR133 DI Box

Stands:

- 16 Microphone Stand Tall Teleboom
- 16 Microphone Stand Short Teleboom
- 1 Tall Straight Microphone Stand

Side-Fills

We do not have side-fills in-house, we can hire them in at a cost of £210.00 + Vat, we find that most productions request side-fills and then do not use them, we have a small stage with high sides, so side-fills can cause feedback onstage, and will also colour the FOH Sound. We are happy to discuss options

SHOW STOP

Albert Hall's fire panel has a pre-alarm phase, whereby on triggering there is a 5 minute window for an investigation period to locate the cause for trigger. In the event that it is deemed a false alarm, the panel can be silenced and reset. If there is indeed a fire, or it cannot be deemed that it is a false alarm, an evacuation would commence.

The venue team have access to a voice of god microphone. In the event of an emergency, this may be taken utilized to communicate to the audience. Albert Hall will never ask of any artists to make any announcements. In the event of the need to perform a show stop, a dedicated member of SIA licensed Security will liaise with the appropriate representatives of the booker/artist and take them and artists to a secure location, remaining on radio communications, with back up mobile communications.

In the event that the cause for a show stop is then dismissed before this has proceeded to an evacuation, the venue team will liaise with the booker or representatives of. Prior to the event, a security briefing will be conducted between the representative of the booker, the venue team, and the security supervisory team. At this briefing, a plan for evacuation and in-vacuation shall be agreed upon. The security person responsible for the safe evacuation or in-vacuation of the artist and booker will be present at this briefing.

In the event of a full evacuation, all exits will be used by the audiences, including the production stairwell. Therefore, it is important that instructions are followed by the security team to ensure safe evacuation for the artists and audience alike.



SUPPLIER CONTACTS

Local Suppliers:

If you need to hire any backline or production equipment we recommend the following:

Audio

Tube UK Ltd.

T: 0345 890 9990, W: www.tubeuk.com

SFX

Available In-House

Confetti Cannons Co2 & Electric

Co2 Jets/Cold Sparks

Prices on Request

Backline

STS Productions:

T: 0161 273 5984, W: www.ststouring.co.uk

Big Fish Rentals:

T: 0161 832 2753, W: www.bigfishrentals.co.uk

Lighting & Rigging :

dbnAudile Lighting Ltd.

0161 273 4297

www.dbnaudile.co.uk

LED/Projection:

Key Teq:

0161 941 6469

www.keyteq.com

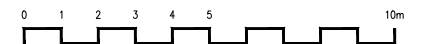
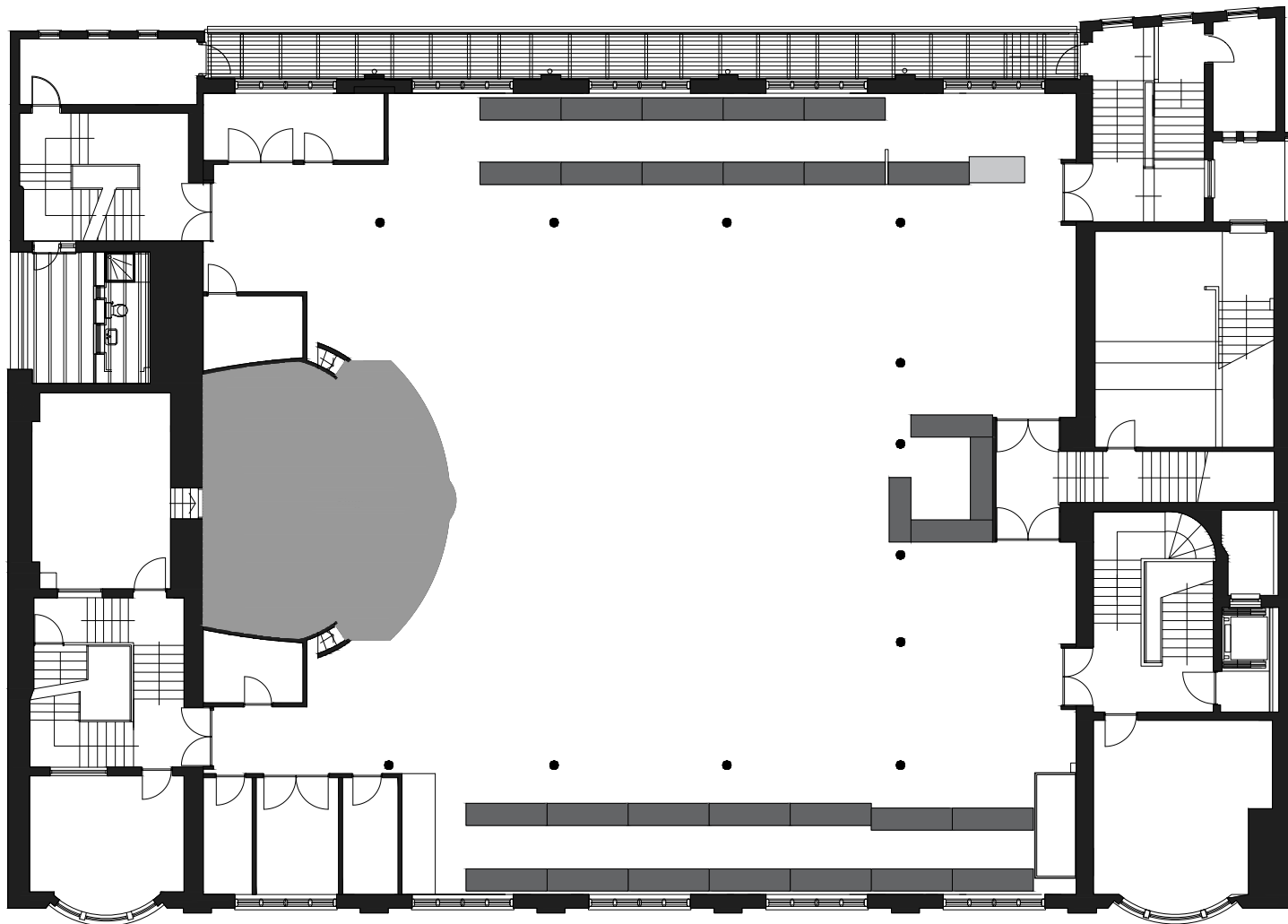
Musicmann:

+44 (0) 7712 342752

www.musicmann.co.uk



STAGE + VENUE FLOORPLANS



FLOORPLANS

Albert Hall Manchester
www.alberthallmanchester.com

Tel: 0161 817 3480

info@alberthallmanchester.com

ALBERT HALL MANCHESTER

Client

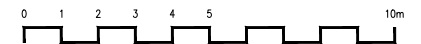
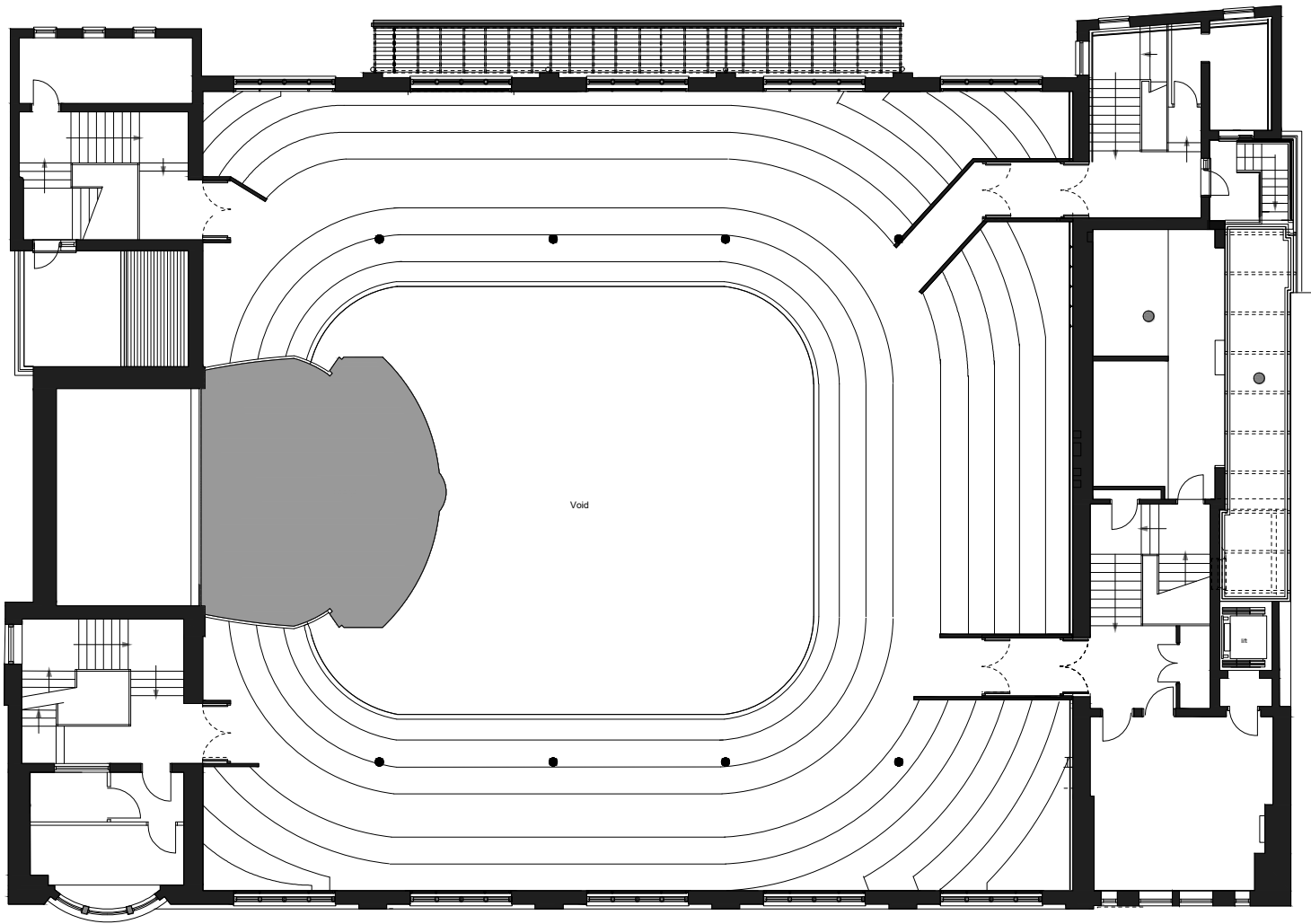
Project
Albert Hall

Drawing Title
264
FIRST FLOOR

Date	12/07/2023	Designer	KM	Drawn By	KM
Scale	1:100	Size	A2	File Ref	
Drawing No	264AHCAD06-FIRST FLOOR	Rev	01		

DESCRIPTION	DRN	CHK	DATE

THIS DRAWING IS PROTECTED UNDER COPYRIGHT AND AT NO TIME MUST ANY PORTION OF THIS DRAWING BE REPRODUCED OR COPIED IN ANYWAY WITHOUT THE PERMISSION OF ALBERT HALL MANCHESTER.
ALL DIMENSIONS MUST BE CHECKED ON SITE AND NOT SCALED FROM THIS DRAWING.



FLOORPLANS

Albert Hall Manchester Tel: 0161 817 3480
www.alberthallmanchester.com info@alberthallmanchester.com

ALBERT HALL MANCHESTER

Client

Project
Albert Hall

Drawing Title
264
MEZZANINE

Date 12/07/2023 Designer KM Drawn By KM

Scale 1:100 Size A2 File Ref

Drawing No 264HCD06-MEZZANINE Rev 01

DESCRIPTION	DRN	CHK	DATE

THIS DRAWING IS PROTECTED UNDER COPYRIGHT AND AT NO TIME MUST ANY PORTION OF THIS DRAWING BE REPRODUCED OR COPIED IN ANYWAY WITHOUT THE PERMISSION OF ALBERT HALL MANCHESTER.
ALL DIMENSIONS MUST BE CHECKED ON SITE AND NOT SCALED FROM THIS DRAWING.

APPENDICIES



Flown Fixture Patch Albert Hall 2023

<u>Fixture Type</u>	<u>Number</u>	<u>Address</u>	<u>Universe</u>	<u>Mode</u>	<u>Location</u>	
Mythos	101	1	1	Std Lamp On	Stage Truss	Purple Tape
Mythos	102	31	1	Std Lamp On	Stage Truss	
Mythos	103	61	1	Std Lamp On	Stage Truss	
Mythos	104	91	1	Std Lamp On	Stage Truss	
Mythos	105	121	1	Std Lamp On	Stage Truss	
Mythos	106	151	1	Std Lamp On	Stage Truss	
Stormy CC LED Strobe	201	450	1	Standard-7ch	Stage Truss	Earth Tape
Stormy CC LED Strobe	202	457	1	Standard-7ch	Stage Truss	
Stormy CC LED Strobe	203	464	1	Standard-7ch	Stage Truss	
Stormy CC LED Strobe	204	471	1	Standard-7ch	Stage Truss	
Stormy CC LED Strobe	205	478	1	Standard-7ch	Stage Truss	
Stormy CC LED Strobe	206	485	1	Standard-7ch	Stage Truss	
Ayrton Perseo	301	85	2	Extended - 60ch	Front Truss	Blue Tape
Ayrton Perseo	302	146	2	Extended - 60ch	Front Truss	
Ayrton Perseo	303	207	2	Extended - 60ch	Front Truss	
Ayrton Perseo	304	268	2	Extended - 60ch	Front Truss	
Robe Robin 600 LED	401	181	1	Mode 2	Stage Truss	Red Tape
Robe Robin 600 LED	402	218	1	Mode 2	Stage Truss	
Robe Robin 600 LED	403	255	1	Mode 2	Stage Truss	
Robe Robin 600 LED	404	292	1	Mode 2	Stage Truss	
Robe Robin 600 LED	405	1	2	Mode 2	Front Truss	
Robe Robin 600 LED	406	22	2	Mode 2	Front Truss	
Robe Robin 600 LED	407	43	2	Mode 2	Front Truss	
Robe Robin 600 LED	408	64	2	Mode 2	Front Truss	
Sunstrip DMX	501	329	1	10ch	Stage Truss	Yellow Tape
Sunstrip DMX	502	339	1	10ch	Stage Truss	
Sunstrip DMX	503	349	1	10ch	Stage Truss	
Sunstrip DMX	504	359	1	10ch	Stage Truss	
Sunstrip DMX	505	369	1	10ch	Stage Truss	
Sunstrip DMX	506	379	1	10ch	Stage Truss	
Sunstrip DMX	507	389	1	10ch	Stage Truss	
Sunstrip DMX	508	399	1	10ch	Stage Truss	
Sunstrip DMX	509	409	1	10ch	Stage Truss	
Sunstrip DMX	510	419	1	10ch	Stage Truss	
Sunstrip DMX	511	429	1	10ch	Stage Truss	
Sunstrip DMX	512	439	1	10ch	Stage Truss	

